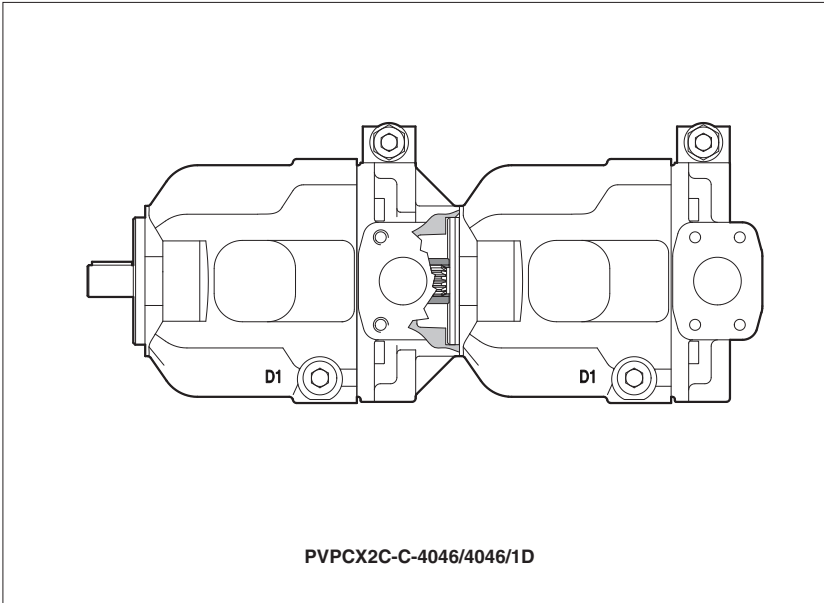


Multiple axis piston pumps type PVPCX2C

variable displacement



PVPCX2C are combined groups made by two variable displacement axial piston pumps type PVPC coupled together by means of a special intermediate flange and joint.

The pumps are available with standard max displacement 29, 46, 71 and 88 cc/rev and with standard mechanical controls (see KT catalog, tab. A160)

Other executions with proportional controls are available on request.

1 MODEL CODE

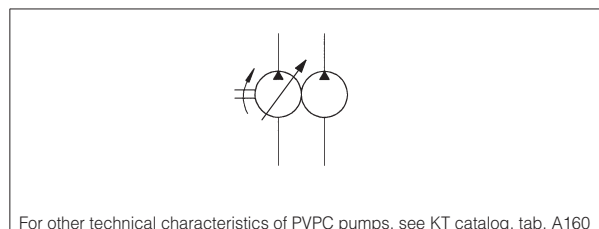
080***	PVPCX2C	-	CH	-	4	/	046	/	3	/	029	/	1	D	-I	X	24DC	*	/*																				
Special code																				Seals material: - = NBR PE = FKM																			
Axial piston pumps multiple execution																																						Series number	
Type of control first / second pump (1): C = manual pressure compensator CH = manual pressure compensator, with venting R = remote pressure compensator L = load sensing (pressure & flow) LW = constant power (combined pressure & flow)																			Supply voltage (only for control type CH): see KT catalog, tab. A160, section 5:																				
Size of first pump see section 2: 3 = for displacement 029 4 = for displacement 046 5 = for displacement 073 and 090																			X = without connector (only for control type CH)																				
Max displacement of first pump see section 2: 029 = 29 cm ³ /rev 046 = 46 cm ³ /rev 073 = 73 cm ³ /rev 090 = 88 cm ³ /rev																			Solenoid of pilot valve (only for control type CH): -I = solenoid OI (DHI) for AC and DC supply																				
Size of second pump see section 2: 3 = for displacement 029 4 = for displacement 046 5 = for displacement 073 and 090																			Direction of rotation (viewed at the shaft end) D = clockwise S = counterclockwise																				
Max displacement of second pump see section 2: 029 = 29 cm ³ /rev 046 = 46 cm ³ /rev 073 = 73 cm ³ /rev 090 = 88 cm ³ /rev																			Shaft (SAE Standard): 1 = keyed (7/8" for 029 - 1" for 046 - 1 1/4" for 073 and 090) 5 = splined (13 teeth for 029 - 15 for 046 - 14 for 073 and 090)																				

(1) proportional controls available on request, consult our technical office

2 PUMPS SIZE AND DISPLACEMENT

size code	displacement code	max displacement [cm ³ /rev]
3	029	29
4	046	46
5	073	73
	090	88

3 HYDRAULIC SYMBOL



4 PUMPS COMBINATIONS AND SHAFT TORQUE

Multiple pump	First pump	1 st shaft max torque [Nm]		Second pump	2 nd shaft max torque [Nm]
		type 1	type 5		
080*** PVPCX2C-*/*-3029/3029	PVPCXB-*/-3029/*	200	190	PVPC-X-3029/5*	135
080*** PVPCX2C-*/*-4046/3029	PVPCXB-*/-4046/*	230	330	PVPC-X-3029/5*	250
080*** PVPCX2C-*/*-4046/4046	PVPCXB-*/-4046/*	230	330	PVPC-X-4046/5*	250
080*** PVPCX2C-*/*-5073/3029	PVPCXB-*/-5073/*	490	620	PVPC-X-3029/5*	330
080*** PVPCX2C-*/*-5073/4046	PVPCXB-*/-5073/*	490	620	PVPC-X-4046/5*	330
080*** PVPCX2C-*/*-5073/5073	PVPCXC-*/-5073/*	490	620	PVPC-X-5073/5*	440
080*** PVPCX2C-*/*-5090/3029	PVPCXB-*/-5090/*	490	620	PVPC-X-3029/5*	330
080*** PVPCX2C-*/*-5090/4046	PVPCXB-*/-5090/*	490	620	PVPC-X-4046/5*	330
080*** PVPCX2C-*/*-5090/5073	PVPCXC-*/-5090/*	490	620	PVPC-X-5073/5*	440
080*** PVPCX2C-*/*-5090/5090	PVPCXC-*/-5090/*	490	620	PVPC-X-5090/5*	440

5 DIMENSIONS [mm]

080* PVPCX2C-C/C-3029/3029**

Dimensions: 39, 221.7, 182.7, 231.2, 221.7

080* PVPCX2C-C/C-4046/3029**

Dimensions: 45, 227.7, 182.7, 260.5, 221.7

080* PVPCX2C-C/C-4046/4046**

Dimensions: 45, 251, 206, 260.5, 251

080* PVPCX2C-C/C-5073/3029**

Dimensions: 55.7, 238.4, 182.7, 303.6, 221.7

080* PVPCX2C-C/C-5073/4046**

Dimensions: 55.7, 261.7, 206, 303.6, 251

080* PVPCX2C-C/C-5073/5073**

Dimensions: 55.7, 290.9, 235.2, 303.6, 290.9

Note:
The above dimensions are referred to the basic pumps with control type C.
For other type of controls (CH, R, L, LW) the reported dimensions remains unchanged